

nebosh

**The National Examination
Board in Occupational Safety
and Health (NEBOSH)**

Dominus Way,
Meridian Business Park,
Leicester LE19 1QW

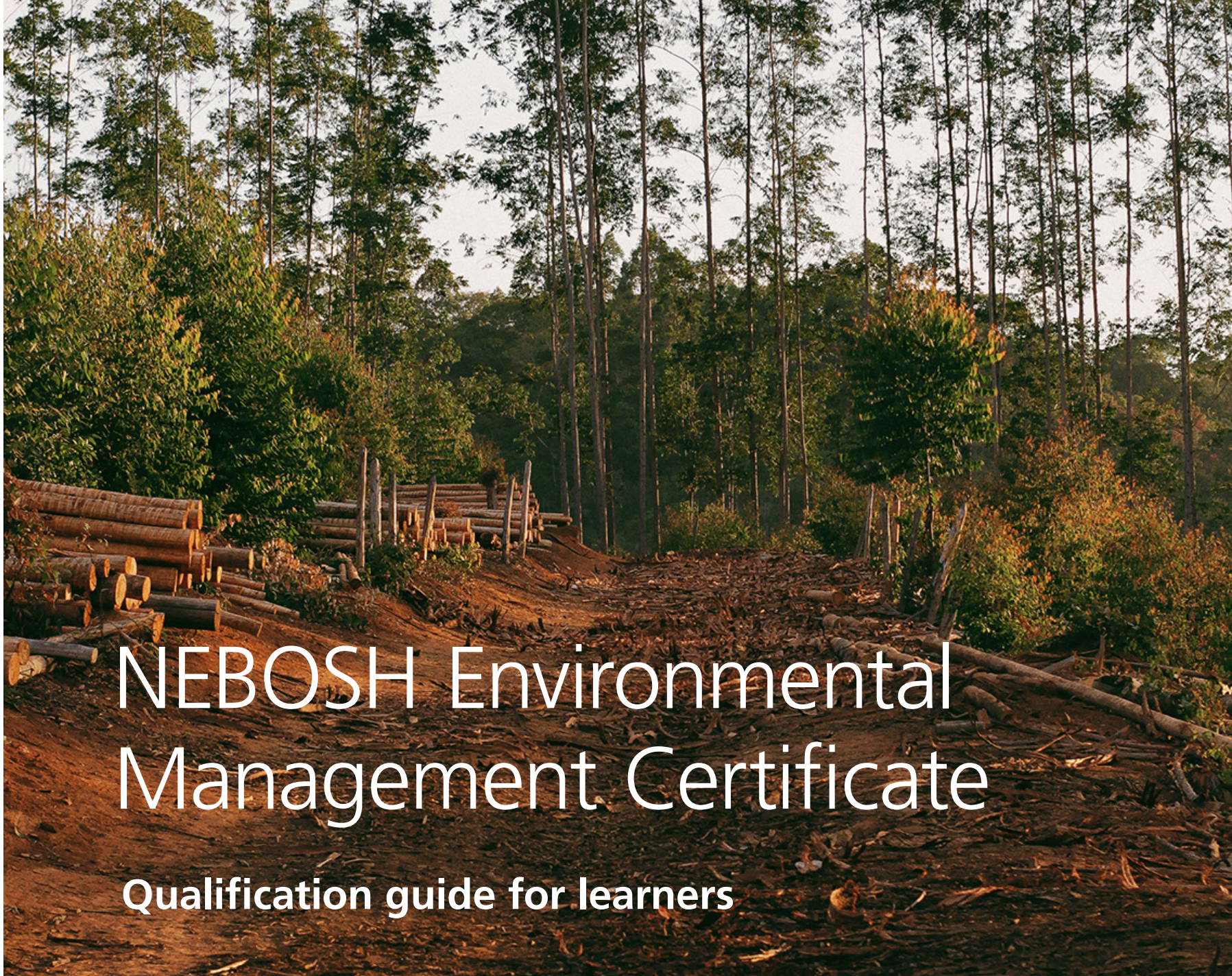
Tel: +44 (0) 116 263 4700
Fax: +44 (0) 116 282 4000
Email: info@nebosh.org.uk
www.nebosh.org.uk

Version: 2.1
Specification date: April 2021

Publication date: January 2023

Registered Charity Number: 1010444

© NEBOSH. All rights reserved. No part of this publication may be reproduced, stored in a retrieval system or transmitted in any form, or by any means, electronic, electrostatic, mechanical, photocopied or otherwise, without the express permission in writing from NEBOSH.



NEBOSH Environmental Management Certificate

Qualification guide for learners

Contents

Qualification overview

Qualification key features	4
----------------------------	---

Qualification Summary

Who is the qualification designed for?	5
--	---

Benefits for you	5
------------------	---

Benefits for your employer	5
----------------------------	---

Achieving the qualification	6
-----------------------------	---

Re-sitting unit(s)	6
--------------------	---

Re-sitting EMC1 to improve your grade	7
---------------------------------------	---

Finding where to study	7
------------------------	---

Qualification grading and issue of qualification parchment	8
--	---

Syllabus

Syllabus summary	10
------------------	----

Learning outcomes and assessment criteria	11
---	----

Qualification overview

Qualification overview

Qualification key features

Unit prefixes and title/s	Unit EMC1: Environmental management Unit EMC2: Assessing environmental aspects and associated impacts									
Assessment	<table border="1"> <thead> <tr> <th></th> <th>Assessment Type</th> <th>Assessment Time</th> </tr> </thead> <tbody> <tr> <td>Unit EMC1</td> <td>Open book examination</td> <td>5 hours*</td> </tr> <tr> <td>Unit EMC2</td> <td>Practical application</td> <td>3 hours</td> </tr> </tbody> </table> <p>*Learners will have a 24 hour window in which to download the examination paper, complete their answers and then upload their answer sheets</p>		Assessment Type	Assessment Time	Unit EMC1	Open book examination	5 hours*	Unit EMC2	Practical application	3 hours
	Assessment Type	Assessment Time								
Unit EMC1	Open book examination	5 hours*								
Unit EMC2	Practical application	3 hours								
Modes of study	Taught (face-to-face), open and distance learning Part-time Block release e-learning									
Notional learning hours	Taught hours: 34 Private study: 25 Assessment: 8 Total hours: 67									
Qualification level and number of credits	SCQF Level 6 with 6 credits (comparable to RQF Level 3)									
Entry requirements	None									
Recommended minimum standards of English	International English Language Testing System 6.0 or higher									
Languages available	English									
Pass standards	Unit EMC1: The provisional pass mark for Unit EMC1 is 45%. More information on how provisional pass marks are set can be found in our FAQs: https://www.nebosh.org.uk/faqs/how-does-nebosh-set-the-pass-mark-for-each-assessment/ Unit EMC2: Pass standard contained in guidance A 'Pass' must be achieved in both units to achieve the Environmental Management Certificate									
Qualification grades	The qualification grade is based on the result from Unit EMC1. Distinction: 75 marks or higher Credit: 65 - 74 marks Pass: 45 - 64 marks									

Qualification overview

Who is the qualification designed for?

This qualification is designed for anyone who has responsibilities for managing environmental issues as part of their work. The qualification is designed to be globally relevant and benefit companies in all industry sectors who are seeking to implement effective environmental management systems, increase positive environmental impacts, and reduce negative environmental impacts.

Benefits for you

The Environmental Management Certificate (EMC) will allow you to:

- understand a range of environmental issues in order to improve performance and reduce harm;
- work with an environmental management system and contribute to continual improvement;
- recognise environmental aspects and evaluate current controls;
- support decision-making with ethical, legal, and financial arguments;
- understand the links between your organisation's activities and wider environmental issues

Benefits for your employer

The importance of the effect of business activities on the environment has long been acknowledged. Many companies, irrespective of size or type of business, now recognise that a more efficient use of resources can also bring substantial cost savings (eg, raw materials, waste disposal, energy and transport). A growing awareness among the general population means that organisations are expected to understand and manage their impacts proactively.

Increasingly, business partners as well as customers, prefer to deal with environmentally responsible companies. Banks, insurers and other sources of finance may avoid businesses that do not take environmental matters seriously and expose themselves to unnecessary environmental risk. Those that are considered environmentally aware may benefit from better access to capital and lower insurance premiums.

The business impact of environmental incidents is also compelling: in addition to the direct cost of cleanup, employers can find themselves dealing with criminal prosecution, claims for compensation, adverse publicity and harm to both business reputation and profitability. Failure to act in an environmentally responsible manner can bring businesses into conflict with the local community, pressure groups and other employers

Qualification overview

Achieving the qualification

The EMC has two unit assessments (see 'Qualification key features' for details on the assessments and the pass standards); you must achieve a 'Pass' in both units to be awarded the qualification.

You will have five years to complete your qualification. The five-year period starts from the date you passed your first successful unit (we call this the 'declaration date'). Any unit that is five or more years old will not count towards the qualification and you will need to retake this/these unit(s) if you still want to complete the qualification.

Re-sitting unit(s)

You may re-sit a unit assessment if:

- you achieved a 'Pass' in a unit that is five or more years old and you need it to achieve the qualification;
- you are 'Referred' (ie, don't pass); or
- want to retake Unit EMC1 to get a higher grade (Unit EMC2 is 'Pass' or 'Refer' and does not count towards the qualification grade).

There is no limit to the number of times you can re-sit unit(s) within the five-year period. A refund will not be given if you register to re-sit a unit before an original unit result is known. If your re-sit result is lower than the original mark, you will keep the original mark awarded for the unit. Re-sit marks are not capped.

Tim Compton - Environmental Health and Safety (EHS) Lead – Marchwood Power Ltd



Tim Compton had worked in compliance since he left university. After initially working off-shore in the North Sea he embarked on a long-term career in the environmental services industry.

It was in 2015 when he got the call about a vacancy at Marchwood Power Ltd, a company which operates a £400million natural gas combined cycle gas turbine (CCGT) power station in Southampton, UK. The site is strictly regulated by the Environmental Agency and operates under the stringent conditions of an Environmental Permit.

While it was Tim's academic qualifications and background in environmental services that secured him the role of Environmental Health and Safety (EHS) Engineer, the preceding job search prompted him to look at what was missing from his CV; vocational qualifications.

It was important to Tim that he was able to gain vocational qualifications that would reflect the competence and skills built up over an accomplished career. He began with the NEBOSH Certificate in Environmental Management: "Marchwood is very supportive of training and it was important to me to bring myself up to date from a qualifications perspective. I think this is an excellent qualification for people, like me, looking to formalise their experience in environmental management or for those embarking on a career in the field."

Qualification overview

Re-sitting EMC1 to improve your grade

If you want to try to improve your grade in Unit EMC1, you need to tell us in writing within 20 working days of the declaration date of your second successful unit. Otherwise, a qualification parchment will automatically be issued showing the original declaration date.

Individual learner feedback

For more information on the feedback available for this qualification, please visit the NEBOSH website: <https://www.nebosh.org.uk/faqs/how-can-i-gain-feedback-on-my-performance-to-assist-with-future/>

Finding where to study

You can search for Learning Partners (the people that provide your training course) using the 'Where to study' tab on our website: www.nebosh.org.
Note: it is best to check directly with the Learning Partner for up-to-date information on course dates.

Luke Strudley - Offshore Wind Turbine Technician - Innogy Renewables UK



When Luke Strudley, left the British Army he wanted to add a brand-new set of core skills that would be useful in any kind of working environment.

"Everyone recognises the importance of safety in the military and so NEBOSH

is something that's talked about a lot when people start looking for a new career. That's why, I chose to take four NEBOSH Certificates, the General, Fire, Construction and Environmental. It was because of the Environmental Certificate I realised that the renewables sector was where I really wanted to be."

"Something my NEBOSH tutor told us really struck a chord. He said that to protect the planet people needed to 'act locally, think globally'. It's that idea that if everyone contributes in their own small way, then collectively we could avoid environmental catastrophe."

Taking his NEBOSH qualifications at the end of his time in the Army really paid off for Luke. He is now an Offshore Wind Turbine Technician with Innogy Renewables UK, a company responsible for Â£4billion of new UK renewable energy investment in the last 5 years.

"It's great, because I really wanted to use my skills as an electrician to do something that would benefit the environment. At the interview stage, as well as talking about the environment, I faced a lot of questions about safety procedures, so all of my NEBOSH qualifications were invaluable. NEBOSH turned out to be a big foot in the door for me."

Qualification overview

Qualification grading and issue of qualification parchment

Your qualification grade is based only on the result from the question paper (Unit EMC1). But you need to achieve a 'Pass' in both units (EMC1 and EMC2) before the parchment can be issued.

The grading boundaries are as follows:

75+	Distinction
65-74	Credit
45-64	Pass
0-44	Refer

When you have completed both units, you are normally considered to have completed the whole qualification. We will then send you a qualification parchment within 40 working days of your final successful unit. We will only issue individual unit certificates on written request.

Once we issue the result of the second successful unit, you have 20 working days to either:

- tell us in writing that you want to re-sit a successful unit to improve your grade (see 'Re-sitting unit(s)' for further information); or
- submit an Enquiry About Result (EAR) request; please see the EAR policy for further information: www.nebosh.org.uk/policies-and-procedures/enquiries-about-results-ears/

Syllabus

Syllabus

Syllabus summary

Element		Recommended Tuition hours	Suggested Self-Study hours	Assessment
1	Foundations in environmental management	6	25	Unit EMC1: Environmental management Open book examination
2	Environmental management systems	5		
3	Assessing environmental aspects and impacts	6		
4	Planning for and dealing with environmental emergencies	3		
5	Control of emissions to air	2		Unit EMC2: Assessing environmental aspects and associated impacts Practical assessment
6	Control of environmental noise	2		
7	Control of contamination of water sources	3		
8	Control of waste and land use	4		
9	Sources and use of energy and energy efficiency	3		

Syllabus

Learning outcomes and assessment criteria

Learning outcome The learner will be able to:	Related content	Assessment criteria
Justify environmental management in the workplace using ethical, legal and financial arguments, linking these to wider environmental issues including sustainable development	1.1 – 1.3	<p>Explain the scope and nature of environmental management and key environmental issues</p> <p>Discuss the ethical, legal and financial reasons for maintaining and promoting environmental management</p> <p>Summarise sustainability, its importance, and its relationship with corporate social responsibility</p>
Recognise workplace activities which may be subject to environmental legislation or enforcement	1.4	Understand the influence of international agreements on national environmental laws and standards, and the potential consequences of non-compliance
Understand the requirements of, and work within, an environmental management system, whilst contributing to continual improvement	2.1-2.3	<p>Recognise the key features and appropriate content of an effective EMS (based on the requirements of ISO 14001)</p> <p>Discuss the benefits and limitations of introducing a formal EMS into the workplace</p>
Assess environmental aspects and associated impacts, determining significant aspects and evaluating current controls	3.1-3.4	<p>Recognise different types of environmental impact</p> <p>Review and use sources of environmental information</p> <p>Apply the principles and practice of environmental aspect and impact assessment</p>
Support environmental emergency planning	4.1-4.2	<p>Explain the importance of environmental emergency planning</p> <p>Describe suitable emergency preparation and responses</p>
Understand the importance of reducing environmental harm; identify sources of noise, air, and water pollution; and suggest suitable control measures	5-7	<p>Demonstrate awareness of the environmental impacts of noise, air, and water pollution</p> <p>Identify sources of environmental harm and suggest suitable control measures for noise and emissions</p>
Understand the issues associated with waste and support responsible waste management.	8.1 – 8.5	<p>Demonstrate awareness of common waste types, the outlets available for waste, and environmental issues associated with waste and contaminated land</p> <p>Suggest suitable waste management measures, applying the waste hierarchy</p>
Understand the benefits and limitations of a range of energy sources, and suggest suitable measures to increase energy efficiency	9.1 - 9.2 9.3	<p>Discuss the benefits and limitations of a range of renewable and non-renewable energy sources</p> <p>Explain how energy efficiency can be increased</p>